

Filter
Gallery

Vanishing
Point

Extract

Pattern
Maker

Liquify

Filters

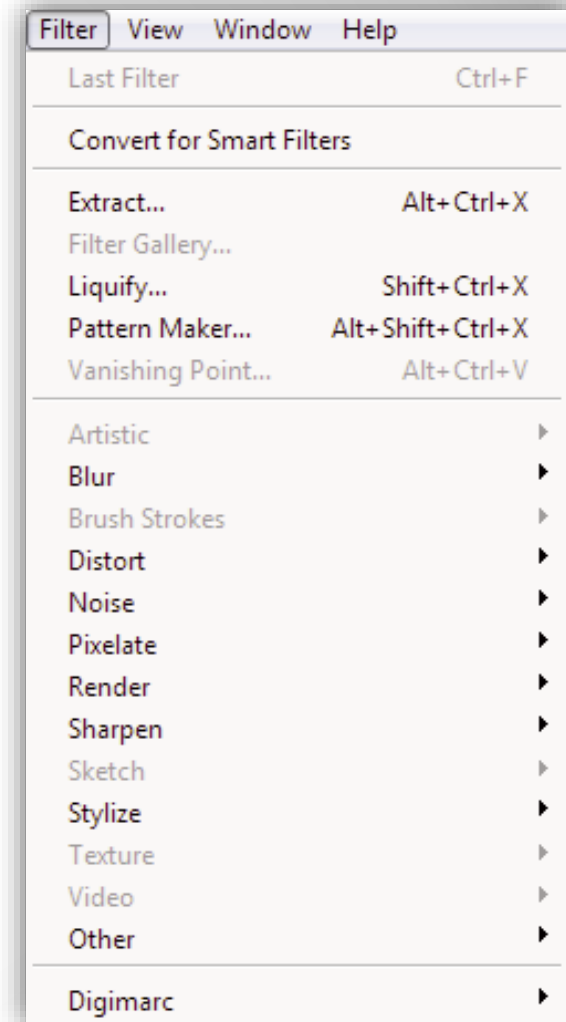
...



Chapter 9 Filters

Introduction

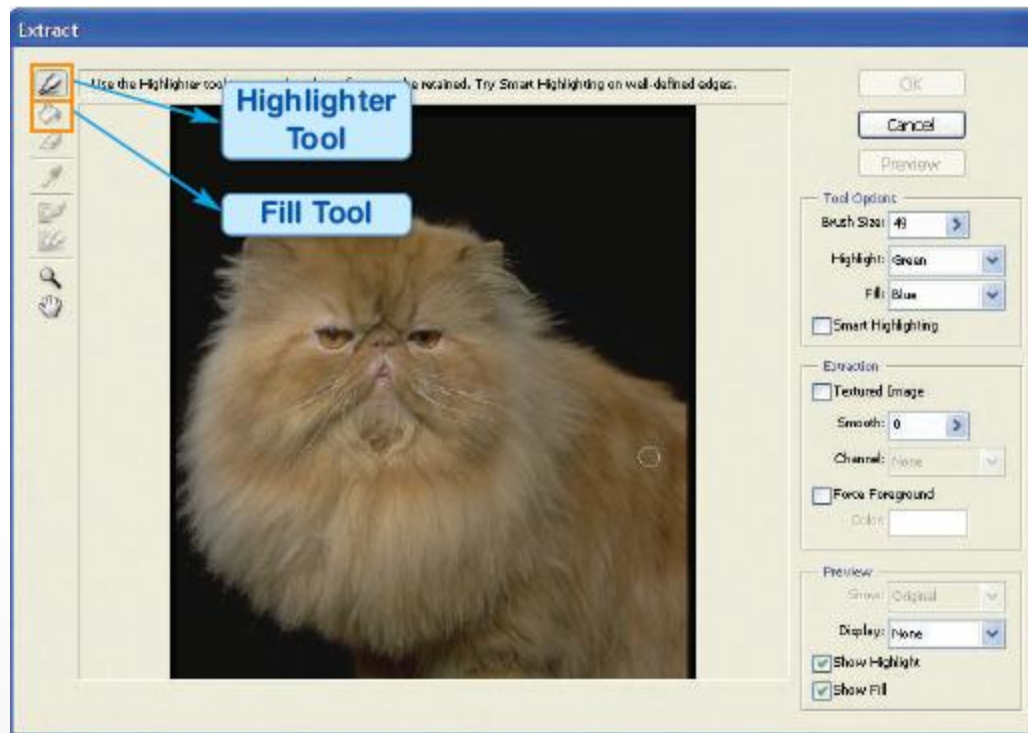
- Filters are little programs within Photoshop that add functionality to Photoshop. Use filters to clean up or retouch photos, apply special art effects that add realistic value to images, and make unique transformations.
- To use a filter, choose an appropriate submenu command from the *Filter Menu*. Before using filters, you need to know that filters are applied to active, visible layers or selections and also some filters are only applied to images which are in RGB mode.



Transparent Background

Extract

- We use the **Extract** command to make some difficult selections that require a sophisticated way to isolate a foreground object from its background. Extract is a kind of artificial intelligence mask and selection tool.



The Extract Window

Changing the Background Color with Extract

1. Open the file **cat_furry.psd**. Open the Extract window from the Filter menu. **Filter -> Extract**.
2. Draw the edges of the image with the Highlighter tool.
3. Fill the image with the **Fill Tool**.
4. Click **OK** to extract the image and apply a background color.



After Using Highlighter Tool



After Using Fill Tool



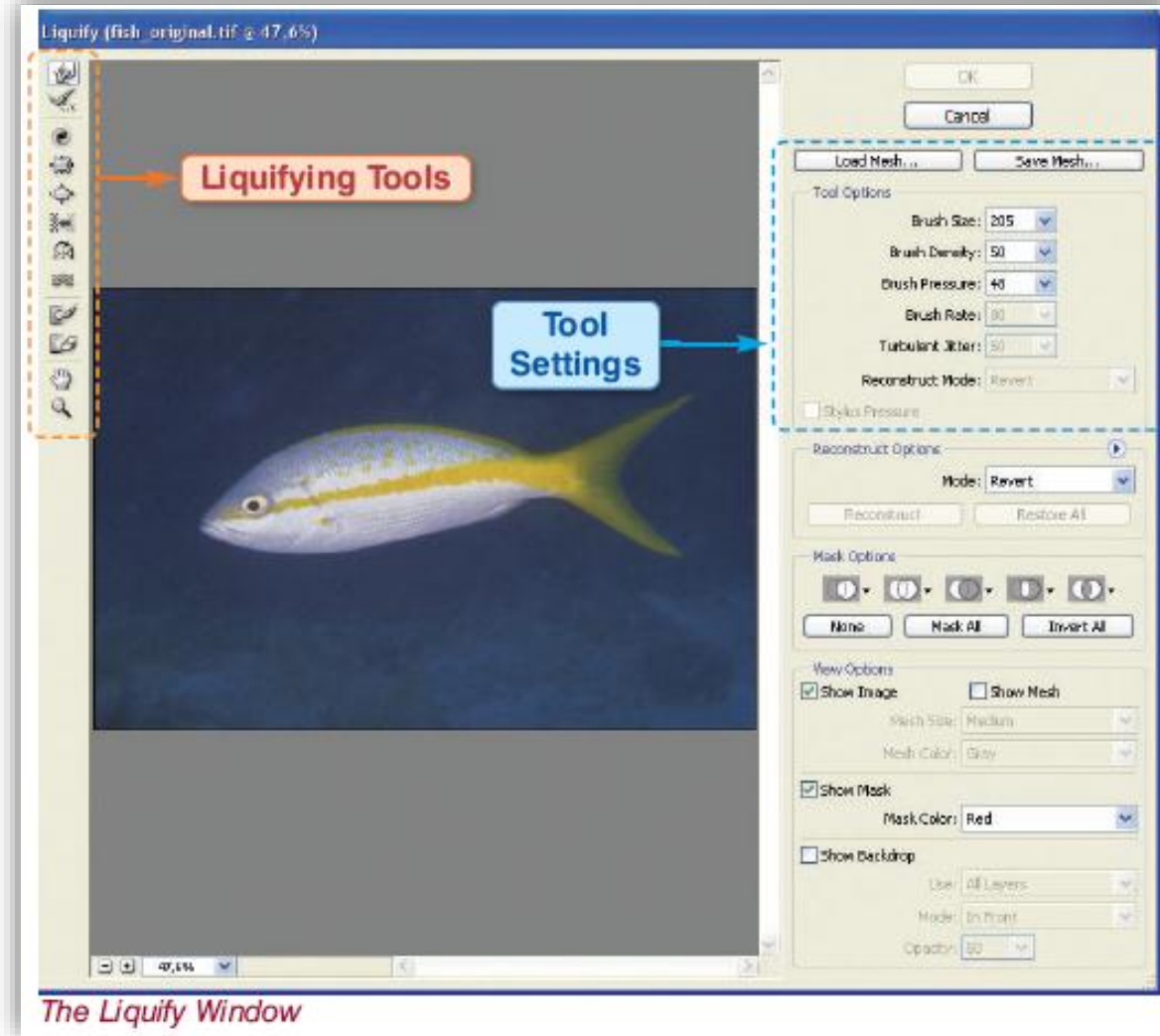
After Extracting the Image



With Red Background

Liquify

- Use the **Liquify** filter menu to rotate, push, pull, pucker, reflect, and bloat parts of images. It is a powerful tool for retouching images and giving artistic effects. To open the Liquify dialog box, choose **Filter->Liquify**.



Applying the Liquify Tools to the Same Image

Reconstruct tool

The Reconstruct tool undoes the distortions you have made on the image.



The Original Image

● Forward Warp tool




● Reconstruct tool




● Twirl clockwise tool




Applying the Liquify Tools to the Same Image

● Pucker tool 




● Bloat tool 




● Push Left tool 



● Mirror tool 




● Turbulence tool 



Masking in the Liquify Menu

You can distort specified parts of the image by using the mask features of the liquify menu.

A part of the fish is masked on the image below. The *Freeze Mask Tool*  has been used for masking. The red area shows the unmasked part of the image. The unmasked part will not be effected by distortions.



The Original Image



After Distorting the Masked Area

Pattern Maker

- A **pattern** is an image that is repeated, or tiled, when used to fill a layer or selection. By using the ***Pattern Maker Menu*** we can make eye catching patterns to fill our selections and layers.



The original image

Making Patterns From Daisies

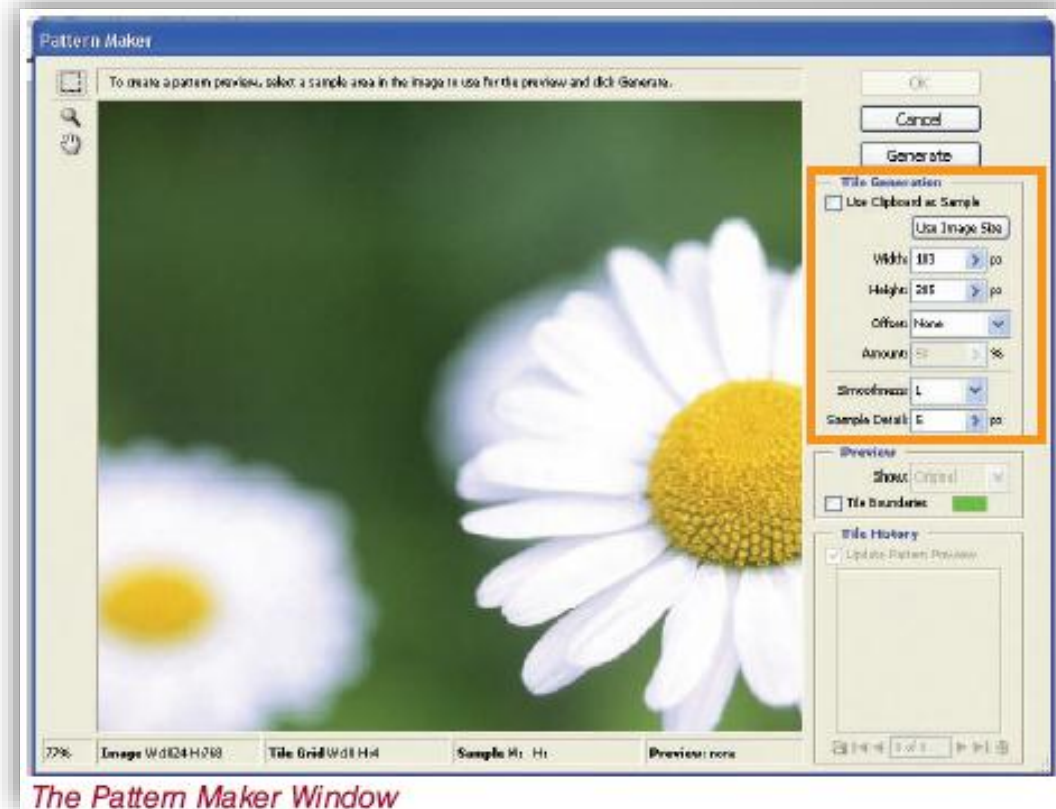
1. Open the file **small_daisies.psd**.
2. Open the Pattern Maker window, *Filter -> Pattern Maker*.

There are only three tools on the left side of the pattern maker menu: **Hand Tool**, **Zoom Tool**, and **Rectangular Marquee Tool**. You can drag out an area to use it as the pattern sample with the Rectangular Marquee Tool.

Pattern Maker

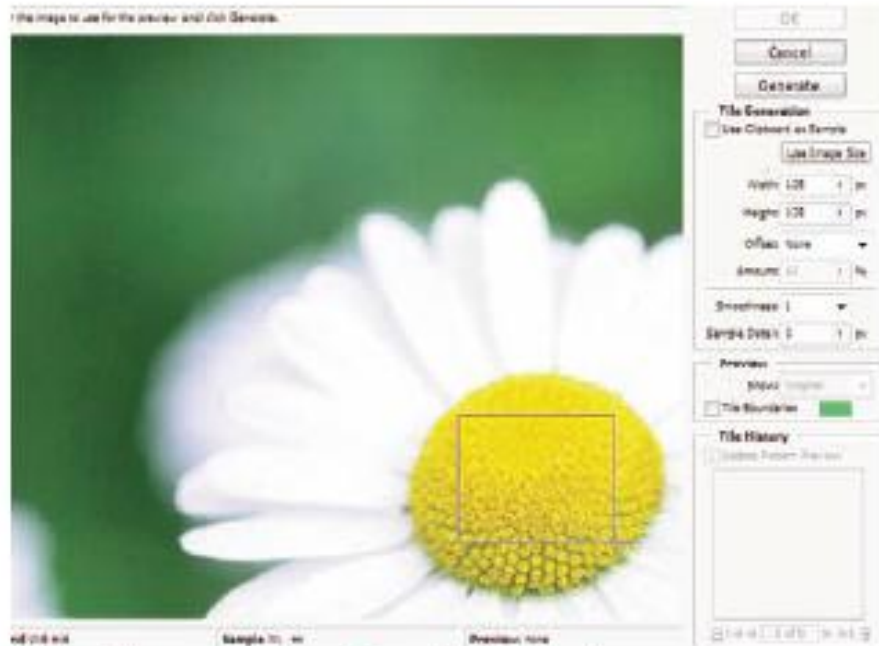
- You can change the settings for the pattern with the Tile Generation options on the right side of the pane. Click the *Generate* button to create a pattern sample.

- You can save patterns and generate many others in the *Pattern Maker* dialog box. Click on the *Save* button at the bottom of *Settings Pane* to keep the sample in computer memory and use arrows to navigate within saved pattern samples. You can delete the saved patterns by using the *Trash Bin* icon. Once you are satisfied with your pattern click *OK* to apply it on the layer or selection.



Pattern Maker

3. Select a pattern sample in the image by using the *Rectangular Marquee Tool*.
4. Click the *Generate* button and save the generated pattern.



Selecting a Pattern Sample in the Image



The Generated Pattern

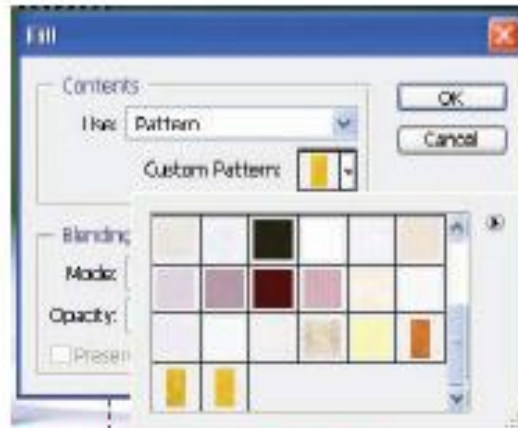
Using Saved Patterns

Saved patterns can be used later as we mentioned above.

1. Open the file **small_daisies.psd**, and make a selection with the *Rectangle Marquee tool*.
2. Choose *Edit->Fill* and select your pattern from the incoming window and click *OK*.



Selecting Part of the Image



Choosing the Pattern



After Applying the Pattern to the Selected Part.

Vanishing Point

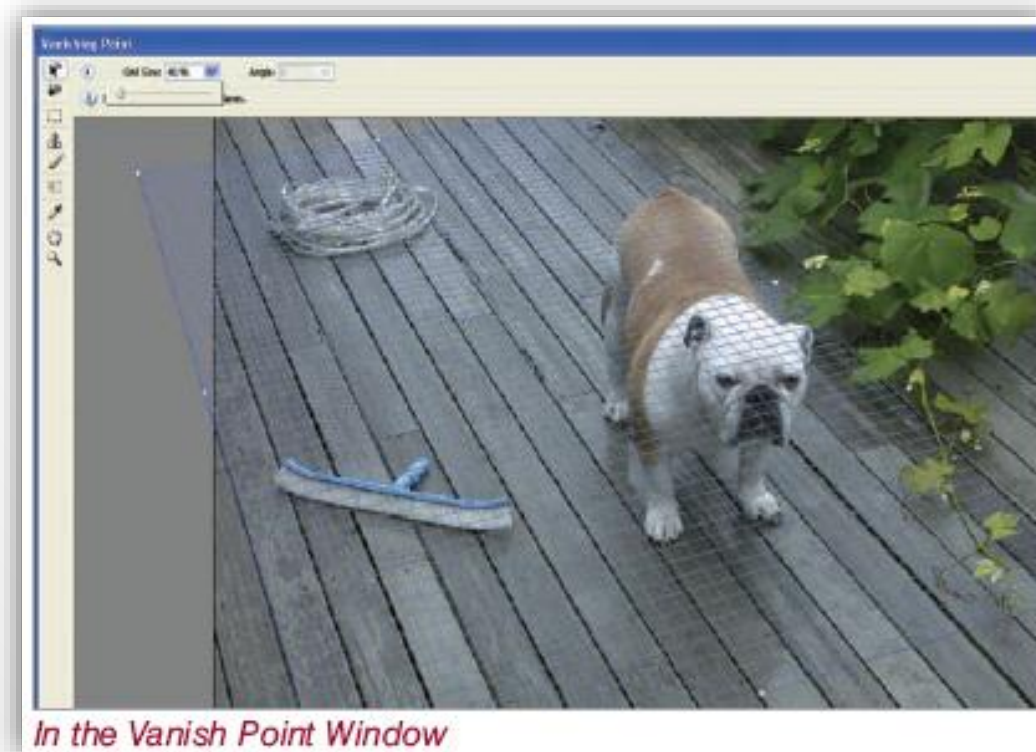
- The Vanishing Point filter is an advanced skills filter that deletes and positions parts of images in perspective. It works somewhat like the Clone Stamp tool.
- 1. Open the file **vanishingpoint.psd**.



The Original Image

Vanishing Point

- 2. Let`s remove the brush in the picture. Choose **Filter->Vanishing Point**. You will see a grid laying on the picture in perspective. The grid shows the perspective which is going to be applied by the **Clone Stamp Tool**. You can change the perspective by dragging the grid from it`s corners.



Vanishing Point

- **3.** Select the Clone Stamp tool, arrange the size, and hardness of the brush and remove the brush from the image.



After Removing the Brush

Some Other Filters

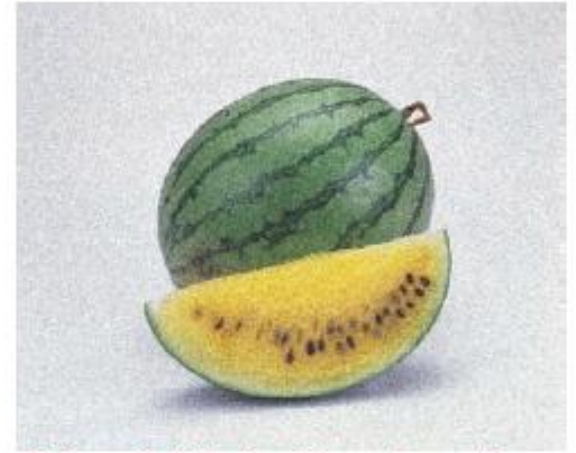
- Learning Photoshop is not memorizing the menu items and the tools. Learning Photoshop means gaining ability to reflect your mind on canvas.
- Photoshop CS3 has many filter options. To gain an expertise of filter, you need to practice on many different images using different filters, tools and combining them with each other.



The Original Image



Artistic->Cutout



Noise->Add Noise, Monochromatic

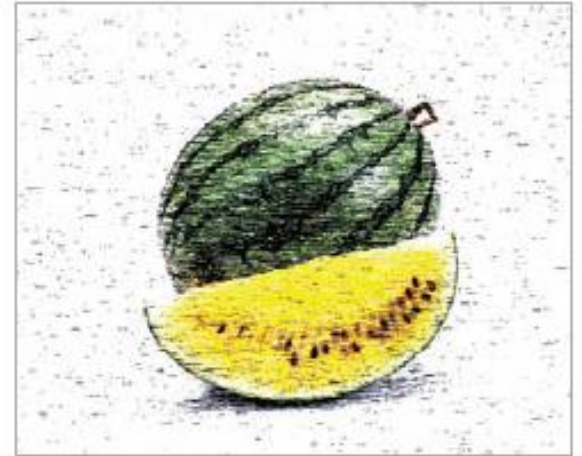
Some Other Filters



Blur->Radial Blur



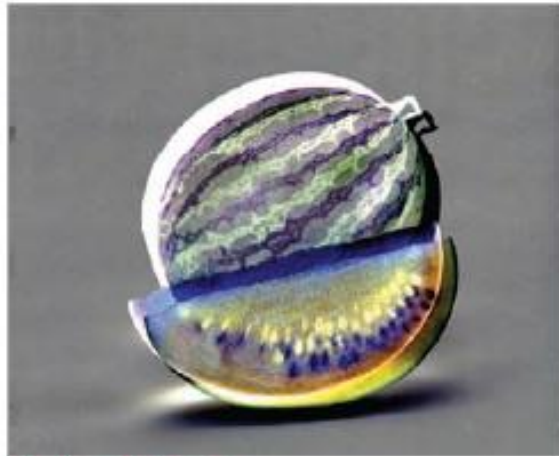
Brush Strokes->Spatter



Pixelate->Mezzoint, Medium Dots



Sketch->Halftone Pattern



Stylize->Emboss

Practice : Creating a Maze with Filters

Here is a very easy and fantastic Photoshop work.

1. Create a new document with the size 500 X 500 and resolution 72 dpi.
2. Change the foreground color to green and choose *Filter -> Render -> Clouds*.
3. Apply the *Mosaic* filter with 15 square cell size, *Filter->Pixelate ->Mosaic*.
4. Lastly choose *Filter->Stylize->Find Edges*. Here you have a maze.



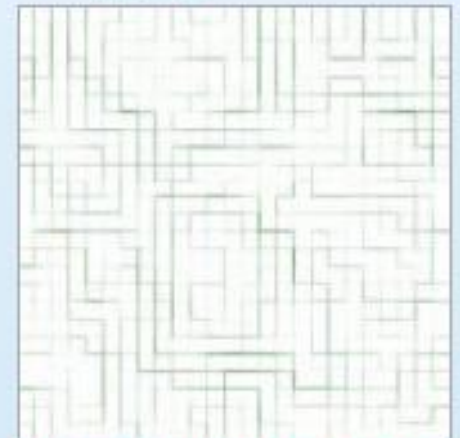
After Applying Render->Clouds



The Mosaic Window



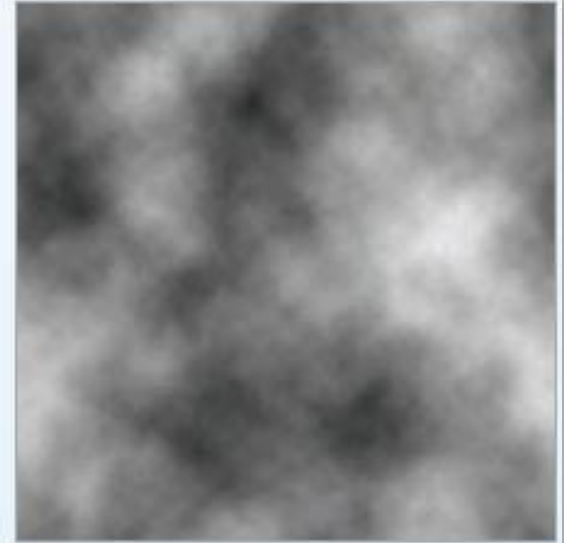
After Applying the Mosaic Filter



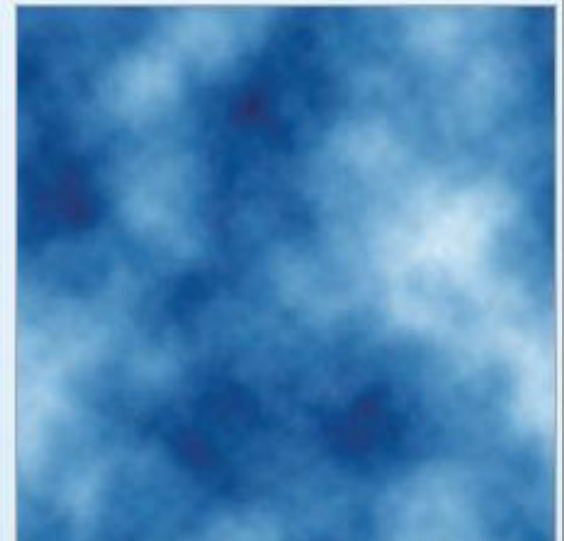
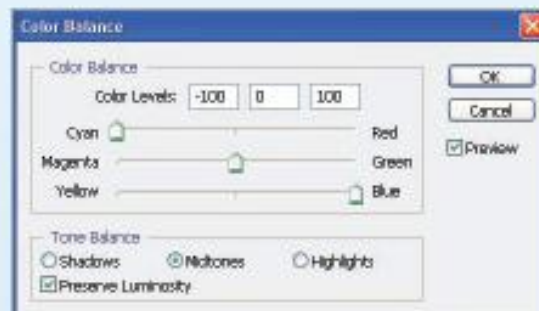
After Applying the Find Edges

Practice : Abstract Design with Filters

- Create a new document with the size 500 X 500 and resolution 72 dpi.
- Press **D** on your keyboard to reset the foreground and background colors to black and white.
- Choose Filter->Clouds.

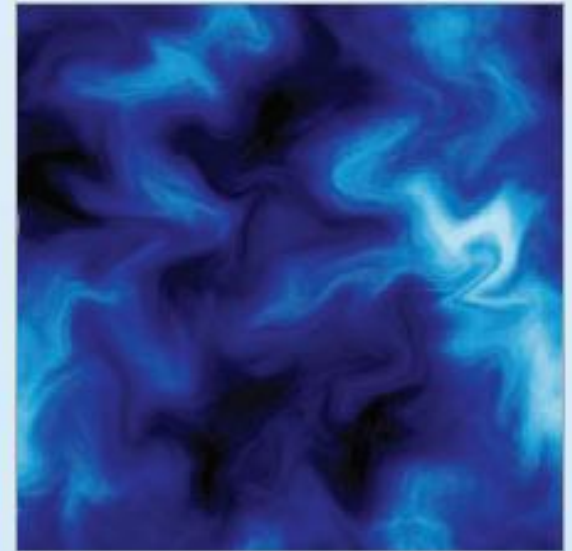


- Go to *Image -> Adjustments -> Color Balance*, and put the given values on the *Color Balance* dialog box.



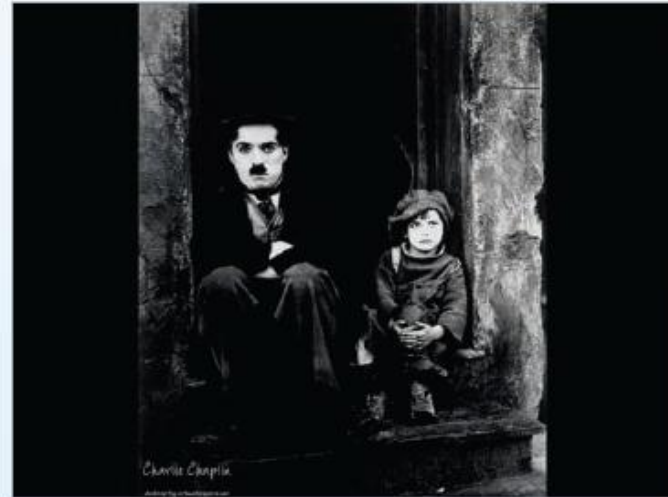
Practice : Abstract Design with Filters

→ Now duplicate your layer by dragging the current one to *Create a new layer* icon. Change the blending mode of the upper layer to *Color Burn*.



Practice : Lightning with Filters

→ Open the image, **Charlie Chaplin.jpeg**.



→ Go to *Filter->Render ->Lightning Effects* and choose the appropriate lights to give the given effects.



The End

...

