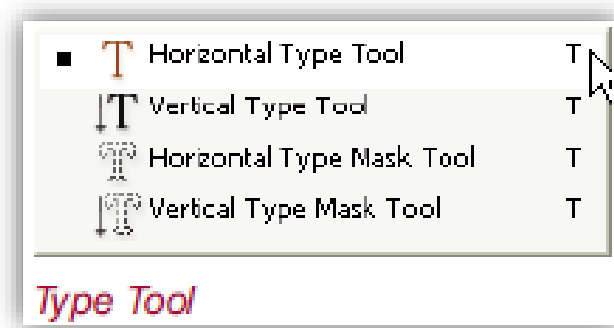


Chapter 6

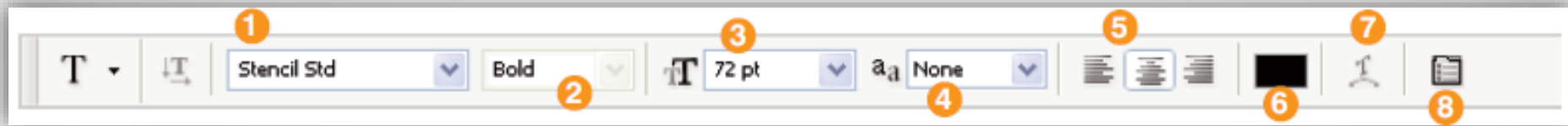
Typing

Type Tool

- By using the Type Tool, you can change font type, size, color, leading, tracking, vertical scale, horizontal scale, baseline shift, case (bold, italic, underline, strike through, superscript, subscript, all caps, small caps), anti-aliasing method, alignments (left, center, right, justify), paragraph indents and automatic hyphenation properties.



Text Tool Bar



1 **Font:** We can choose from a huge selection of fonts from the fonts menu.

Times New Roman ComiC Sans MS **Cooper Black** Swis721 BT **Square 721**

2 **Font Style:** To use regular, bold, italic, bold-italic styles we need to use this menu.

Regular, **Bold**, *Italic*, ***Bold-italic***

3 **Font Size:** We define the size of the fonts from this menu.

8 pt 10 pt **18 pt** 8 pt 10 pt 18 pt 8 pt 10 pt **18 pt**

4 **Antialiasing Method:** In this menu we can select antialiasing methods such as strong, sharp, and smooth.



5 **Text Alignment:** Text alignment icons are for aligning the text to left, right or center.

Left
Aligned Paragraph

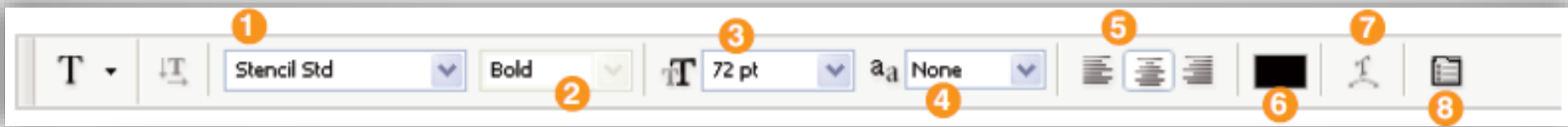
Center
Aligned Paragraph

Right
Aligned Paragraph

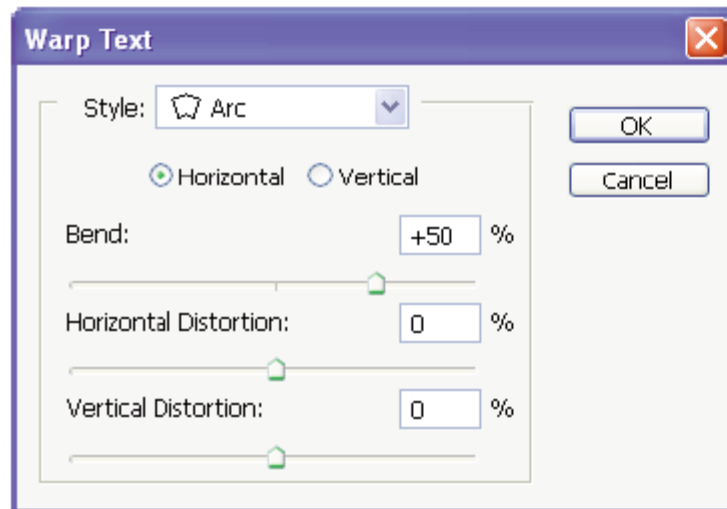
6 **Text Color:**

Blue Orange Black Green Red Purple Yellow

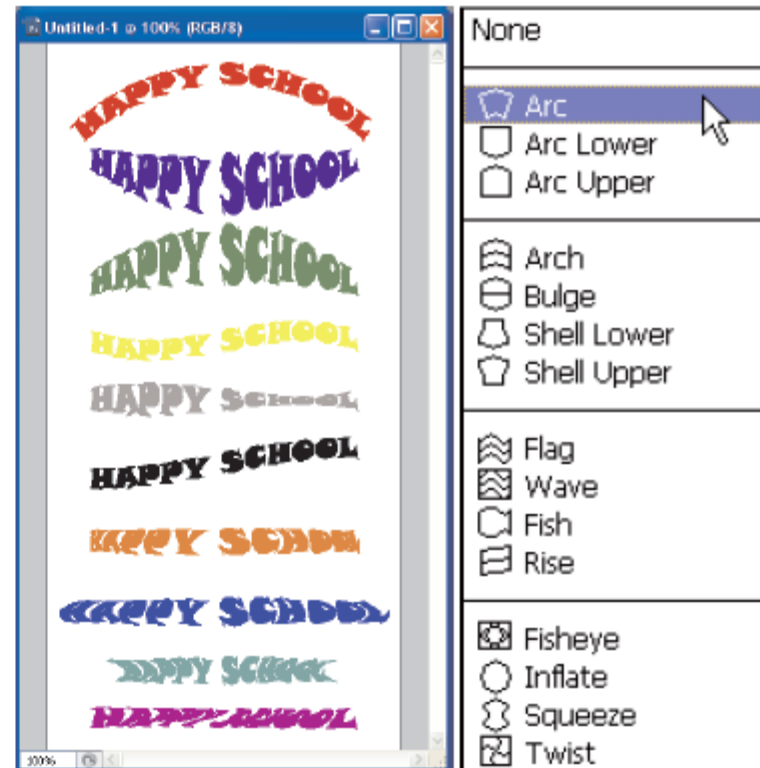
Text Tool Bar



7 Warp Text: Photoshop provides a variety of preset type warps that you can use to customize the shape of your text.



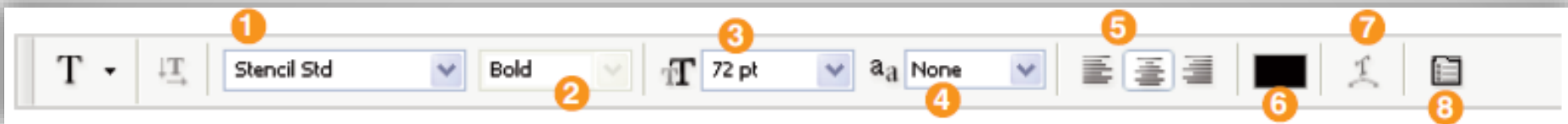
Warp Text Dialog Box



Applied Warp Text

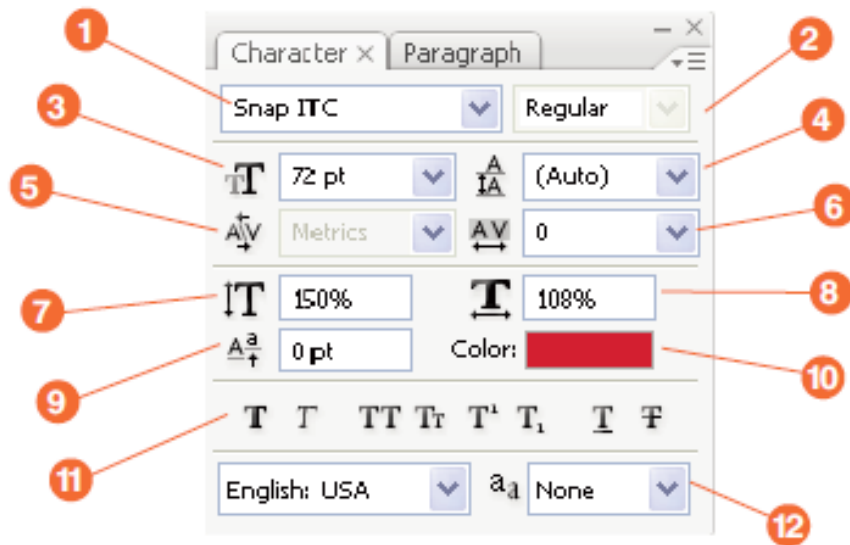
Warp Text Menu

Text Tool Bar



8 Character and Paragraph Palette

Character Palette: The character palette is a very useful feature of Photoshop that helps us to change the typsettings of a selected text.



Character Palette

1. Font
2. Font style
3. Font size
4. Leading (The space between two text lines)
5. Kerning (The amount of space between text characters. Kerning varies between fonts.)
6. Tracking refers to the amount of space between a group of letters to affect density in a line or block of text.
7. Vertical scale
8. Horizontal scale
9. Superscript
10. Font color
11. Text presets
12. Anti-aliasing method

Some Character Palette Applications

Zambak
Publication

Leading: Auto

Zambak
Publication

Leading: 20

Zambak
Publication

Vertical Scale: %150

Zambak
Publication

Horizontal scale: %200

Zambak
Publication

Tracking: 0

Z a m b a k
P u b l i c a t i o n

Tracking: 100

Zamba^k
Publication

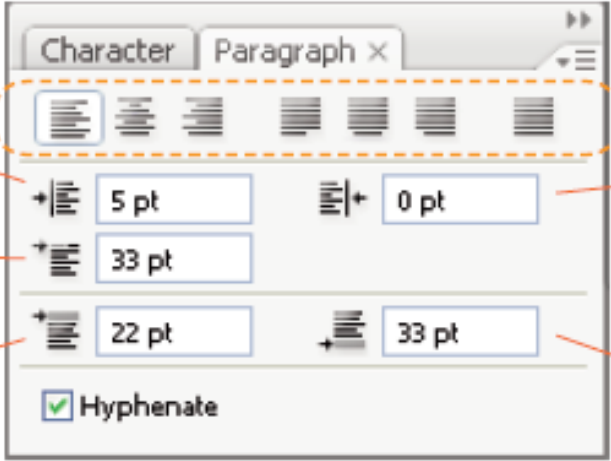
Superscript

Zambak
Publication

Underline

Paragraph palette

- The paragraph palette is very useful when we are working with text which consists of one or more paragraphs.



The image shows a screenshot of the Paragraph palette in a software application. The palette has two tabs: 'Character' and 'Paragraph'. The 'Paragraph' tab is active. It contains several sections of controls:

- 1:** A group of seven alignment buttons (left-align, center-align, right-align, justify, etc.) enclosed in a dashed orange box.
- 2:** A callout pointing to the alignment buttons.
- 3:** A callout pointing to the first line indentation control, which shows a plus sign and a text box with '5 pt'.
- 4:** A callout pointing to the right margin indentation control, which shows a plus sign and a text box with '0 pt'.
- 5:** A callout pointing to the space before paragraph control, which shows a plus sign and a text box with '33 pt'.
- 6:** A callout pointing to the space after paragraph control, which shows a plus sign and a text box with '33 pt'.

At the bottom of the palette, there is a checkbox labeled 'Hyphenate' which is checked.

Paragraph palette

1. Indent left margin
2. Alignment buttons
3. First line indentation
4. Indent right margin
5. Space before paragraph
6. Space after paragraph

Indentation

→ The paragraph palette is very useful when we are working with text which consists of one or more paragraphs.

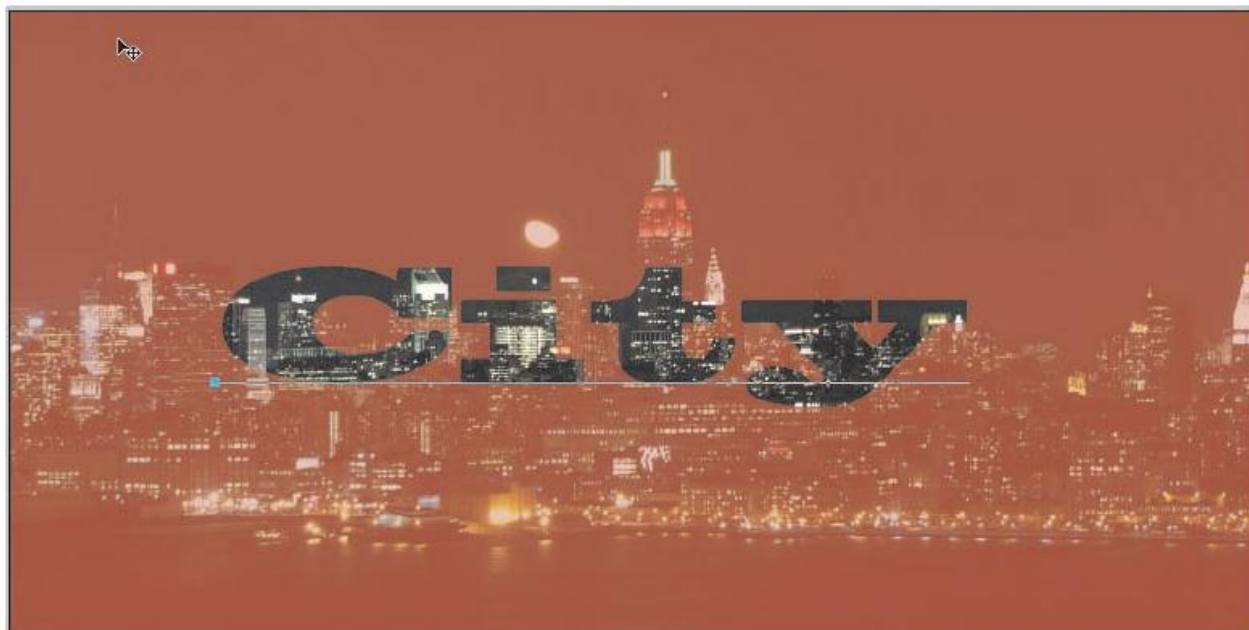
The paragraph palette is very useful when we are working with text which consists of one or more paragraphs.

The paragraph palette is very useful when we are working with text which consists of one or more paragraphs. ←

Horizontal and Vertical Type Mask Tools

The **Horizontal and Vertical Type Mask Tools** allow us to create selections in the shape of type fonts. Once these selections are made, you can make type that is filled with a pattern or an image. But when you are using the Type Mask Tools on canvas No New Layer is created by default.

- ✓ Open the file **newyork.jpg**.
- ✓ Select the *Horizontal Type Tool* and write **City** on the image.



Masking Mode

Horizontal and Vertical Type Mask Tools

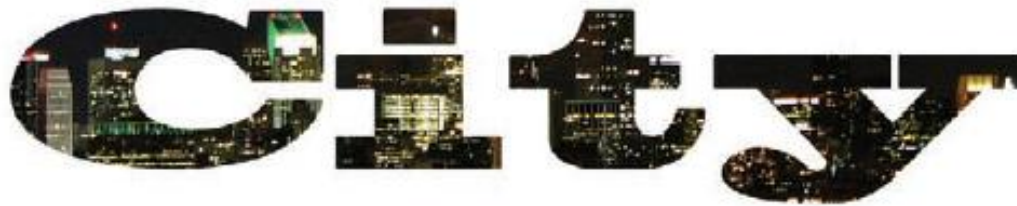
- As you see our screen is in Masking Mode. Text part shows us our selection and the red area shows the surface out of selection. Now to switch screen to the normal mode, just select any tool except the *Type Tool*.



Normal Mode

Horizontal and Vertical Type Mask Tools

- Now we click **Select -> Select Inverse** to select the text's surrounding and press the Delete Key to fill it with white.(note that **newyork.psd** is a background layer so deleting background layer means filling it with background color)



Result

Rasterizing the Text

- Type tools create vector image texts. But because Photoshop is a raster image editing program, sometimes we have to convert texts to raster image. To do this after selecting the text layer on the Layers Panel, follow **Layer > Rasterize > Type** path or right-click on the type layer and select **Rasterize Type** from the pop-up menu. Once you rasterize the layer you can't change it's features such as size or shape from the **Type Toolbar**.

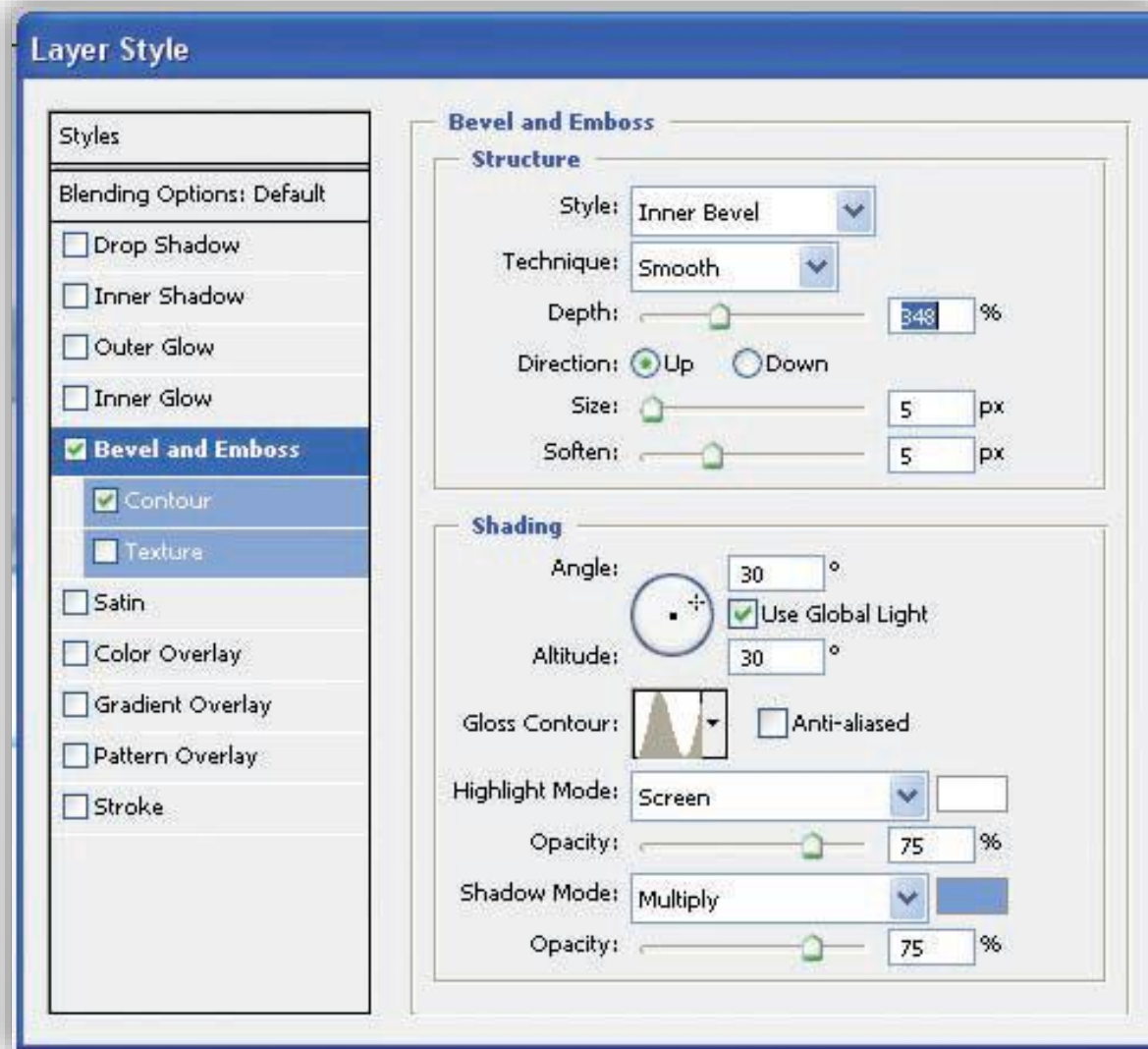
Practice

Giving Layer Styles to Texts

- Open the file **winter.psd**.
- Type **winter** on the picture with the *Horizontal Type Tool*. Font: Gill Sans Ultra Bold, Size: 24, color white.
- Rasterize the Type. *Layer > Layer Style*. Apply the following settings.

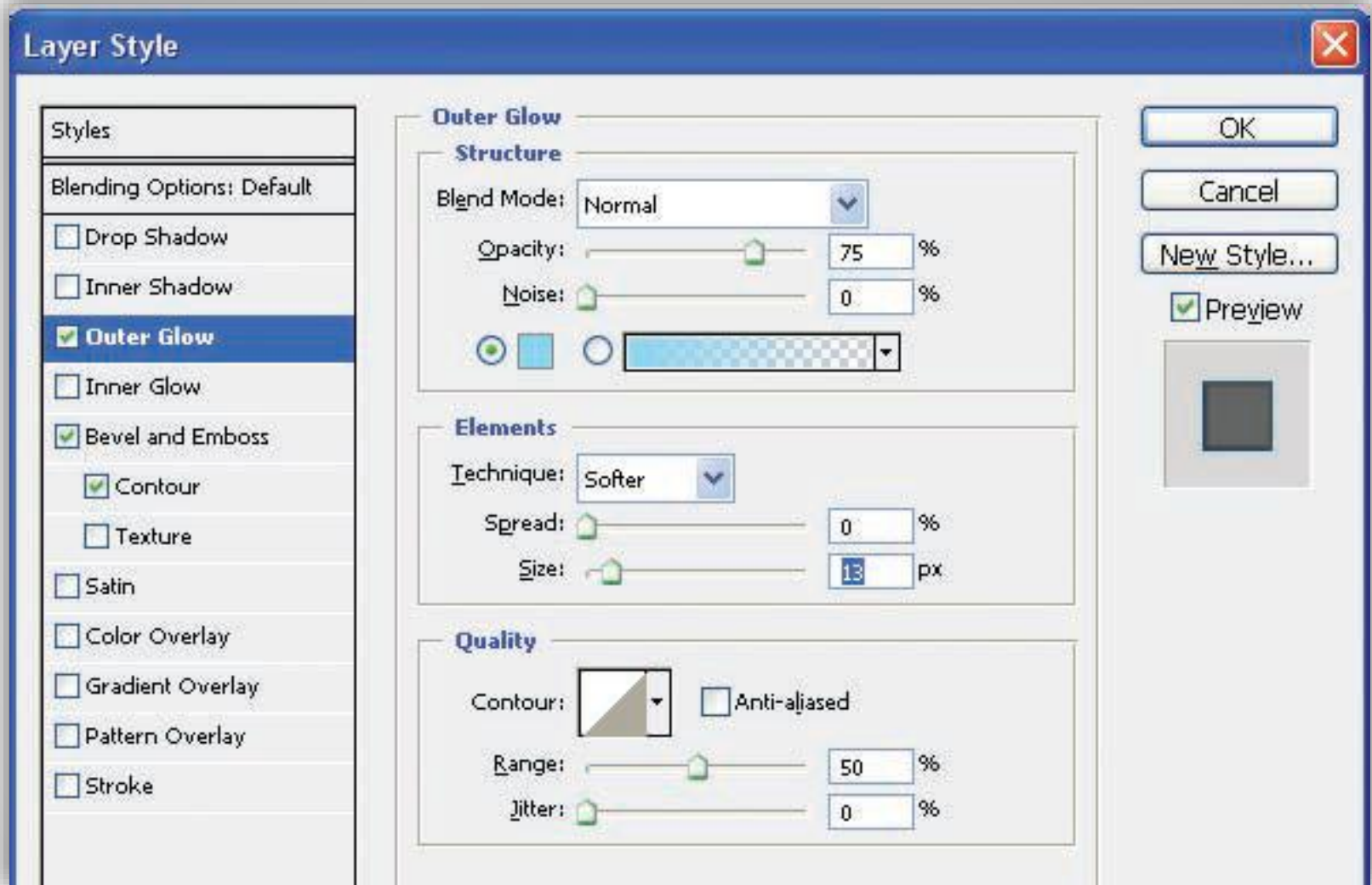


Practice



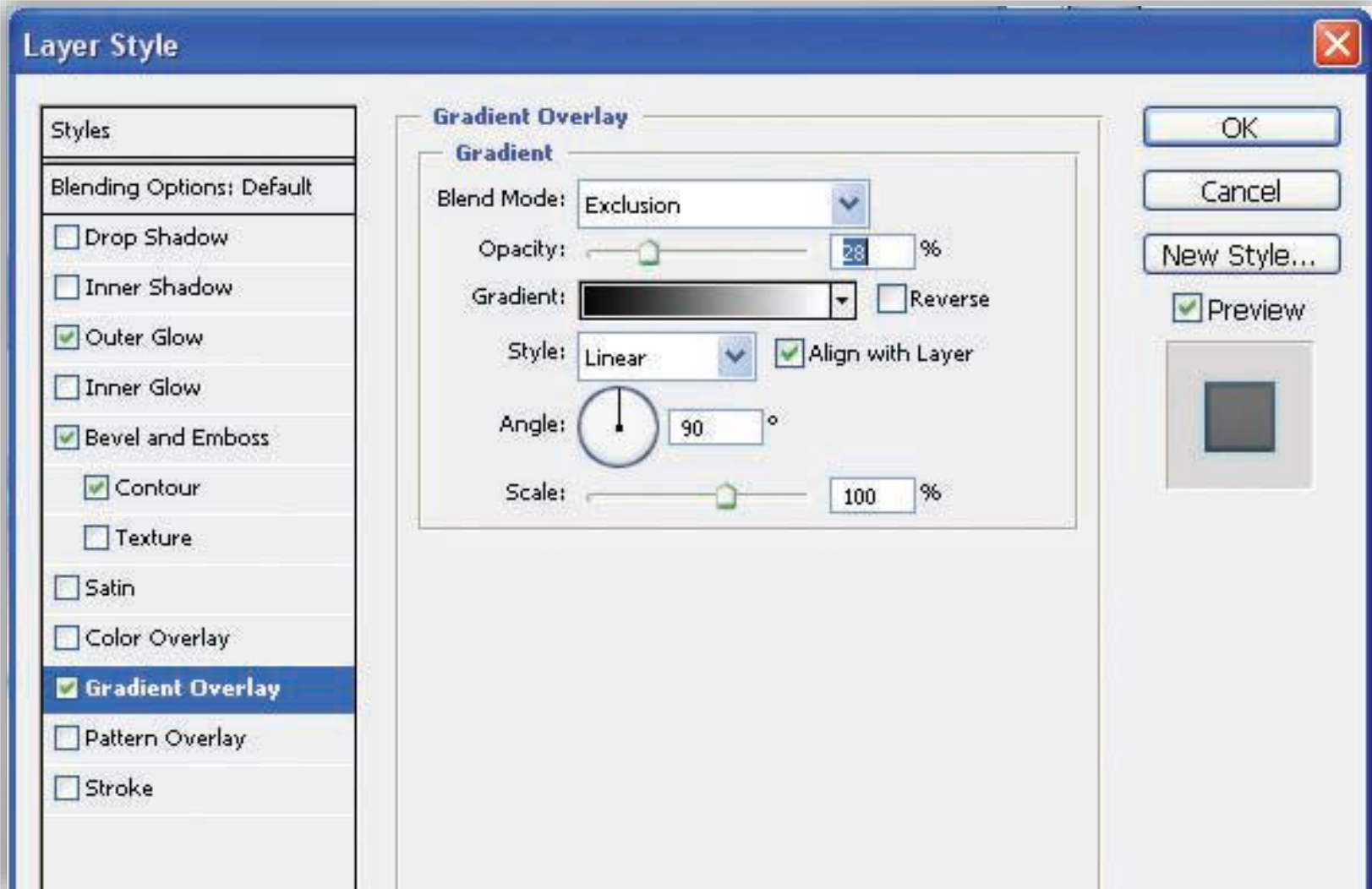
Applying Bevel and Emboss Styles

Practice



Applying Bevel and Emboss Styles

Practice



Applying Gradient Overlay style

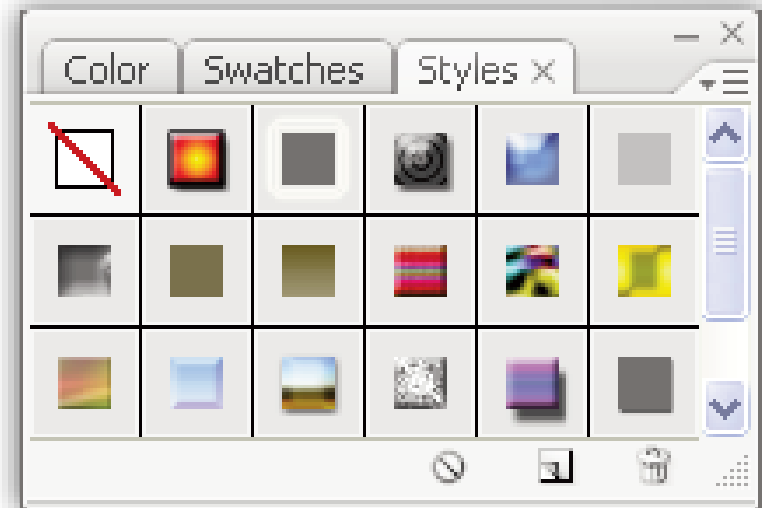
Practice



The Result

Style Palette

- The **Style Palette** has different useful styles. You can apply default styles of Photoshop here. You can even save your own styles for future use.



Extra Info

- If you would like to write a paragraph more than a single line in Photoshop, after selecting the *Horizontal Type Tool*, on the canvas draw a rectangle. That rectangle will be our paragraph boundaries.



Practice

Type Tools

→ Create the following images with the *Type Tools*.



Practice

Cheese Text

- Create a document : 600 X 400 with 72 dpi resolution. Using the *Selection Tools* and the *Layer Styles* make a cheese text as given.



The End

...

