

Layer
Essentials

Layer
Operations

Linking
Layers

Grouping
Layers

Merging
Layers

Creating
New
Layers



Chapter 4 Layers

Merging
Layers

Creating
New
Layers

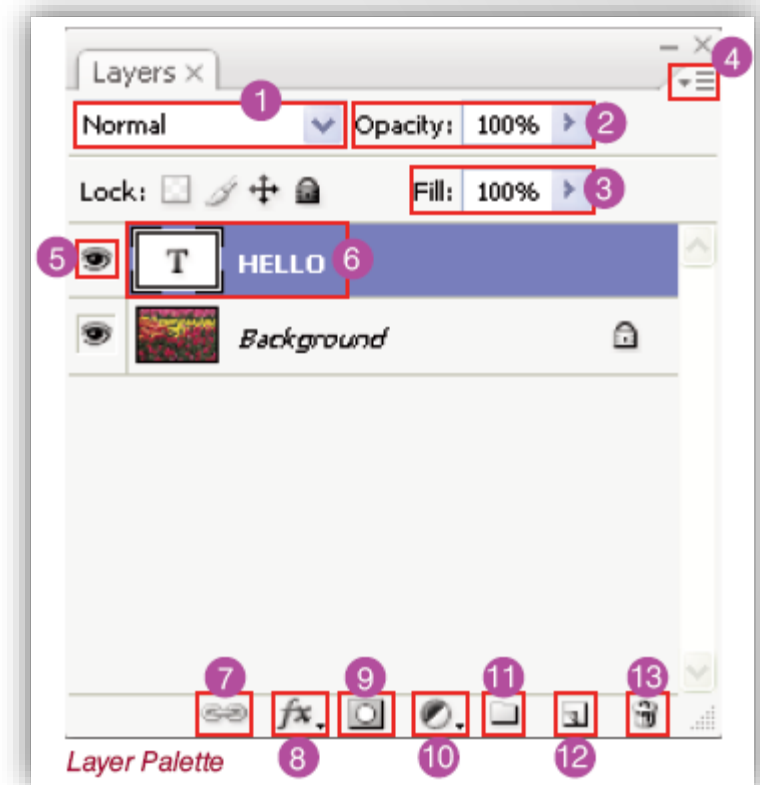
Layer Essentials

- Layers in Photoshop are just like layers of acetate where each image has its own layer to build up a composite image. Each layer has its own transparency, position and can be edited independently.
- Layers are fundamental part of Photoshop and it is essential for us to learn how they interact well if we want to use Photoshop effectively.
- To understand benefit of layers, we can think of an artist creating his masterpiece. He must work with zero mistakes to finish his job. Because applying a small brush stroke to a wrong part or using an inappropriate color on small surface can spoil the whole work and he has to start from the beginning again. But in photoshop we have layers to help us edit, modify, colorize different parts of artworks free from their other parts. So any mistake you make only effects a limited area that can be fixed easily.



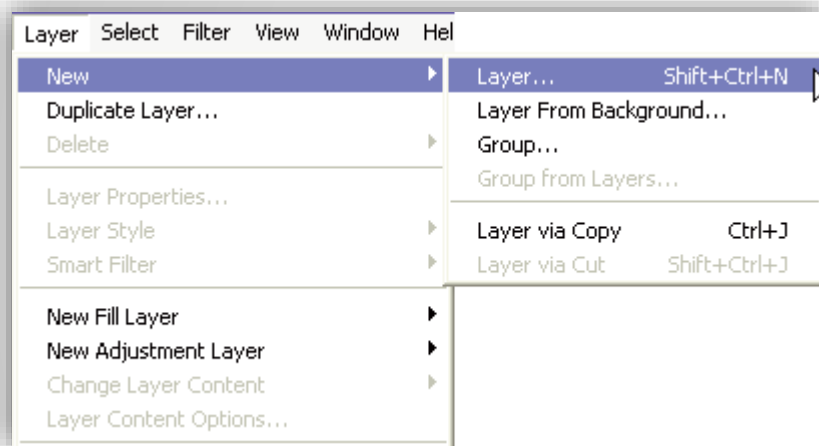
Layer Window

1. Set the blending mode for the layer
2. Layer opacity
3. Fill opacity affects pixels painted in a layer or shapes drawn on a layer without affecting the opacity of any layer effects that have been applied to the layer.
4. Layer options window
5. Hide/Unhide
6. Layer preview and layer name
7. Link layers
8. Add a layer style
9. Add layer mask
10. Create new fill or adjustment layer.
11. Create a new group
12. Create a new layer
13. Delete layer

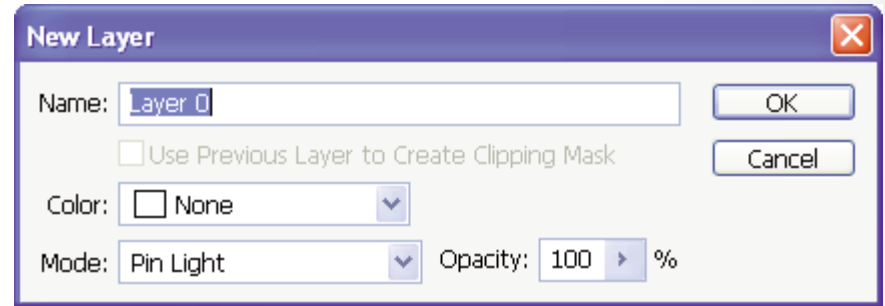


New Layer

- To create a new layer, we simply click on **Layer ->New' Layer**. Once we do that, a new layer is created on the top of our layer stack.



Layer Menu



New Layer Dialog Box

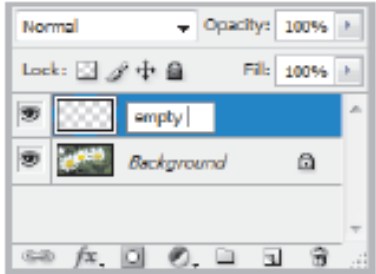
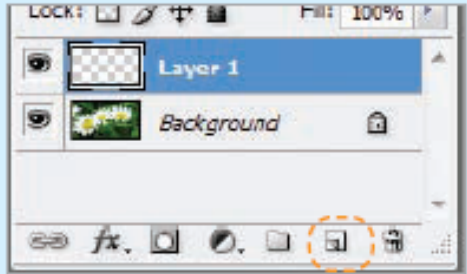
New Layer

- Open the file **daisies.psd** and create a new layer.



New Layer Button

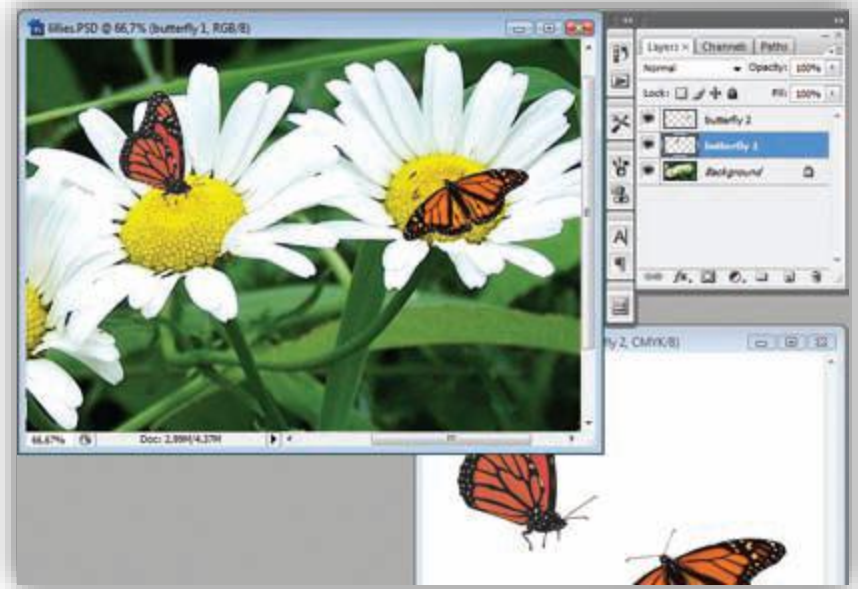
We can also click on "new layer" icon on the layers panel to create a new layer.



- **Renaming a Layer**
 - To rename a layer, simply double click on the layer name and change it's name.
 - On daisies.psd rename the new layer you created as empty layer.

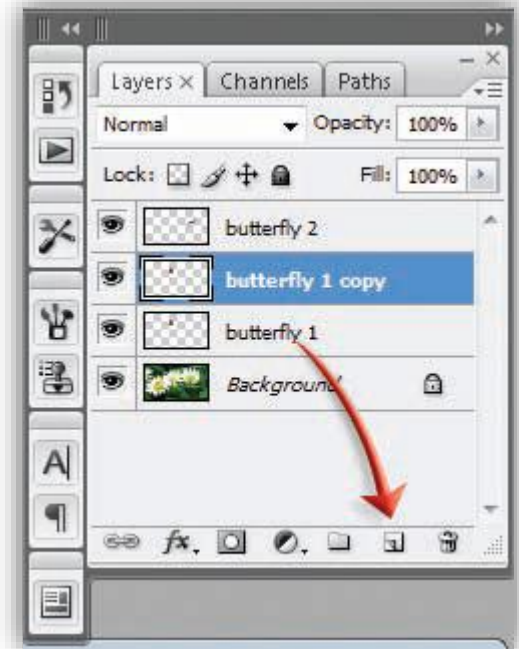
Moving a Layer

- The easiest method to move a selection or a layer from one document to another is the drag and drop method. Using the move tools drag and drop the layer on any part of the other document. You will see the moved layer on top of all the layers. To do this both of the documents should be open and the document windows should be in restore mode.
- Open daisies.psd and butterflies.psd. When butterflies.psd is the active window click on butterfly 1 layer and drag it into daisies.psd, and Save As daisies and butterflies.psd.



Duplicating a Layer

- By duplicating a layer, we produce a copy of all items in that layer. To duplicate a layer, first we select the layer by clicking on it once then we follow the **Layer -> Duplicate Layer** path. The other way for duplicating a layer is right-clicking on the layer and dragging the layer to the **New Layer** icon.

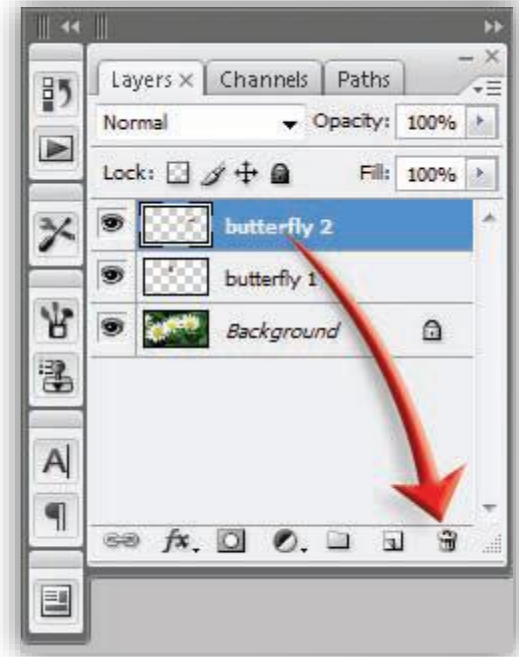


Duplicating a Layer

- Open the file daisies and butterflies.psd and duplicate butterfly 1 layer. Then by using the move tool move the duplicated butterfly somewhere else in the picture.

Deleting a Layer

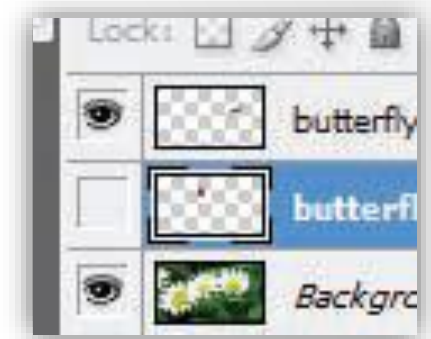
- To delete a layer we click on **Layer** → **Delete layer** or we drag and drop the layer to the trash bin which is located at the right bottom corner of the panel.
- Open the file daisies and butterflies.psd and delete butterfly 2 layer.



Deleting a Layer

Hide/Show Layers

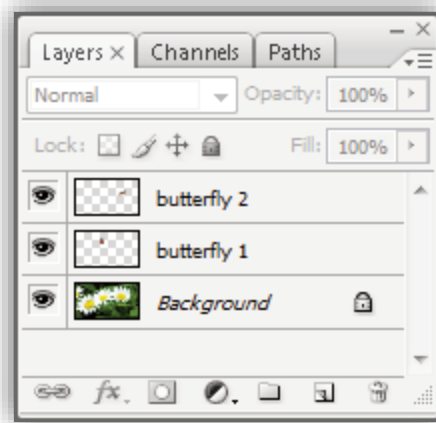
- To hide a layer, we first select the layer by clicking on it once then we follow **Layer -> Hide layers** path. The shortest way to hide a layer is to click on the eye icon on the left side of the layer. To unhide a layer, we click to **Layer -> Show layers** or click on the empty box on the left side of the layer to bring back the eye symbol for making the layer visible.



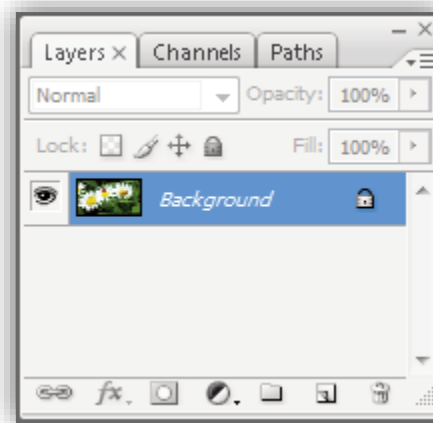
Hide/Unhide Layers

Merging Layers

- Sometimes we need to combine all layers in one layer. This is called “merging layers” in Photoshop. Merging layers do not change any effect given to the layers. To merge layers, we first select the layers by pressing the Shift key while clicking on them. Then we follow **Layer** → **Merge Layers** path.



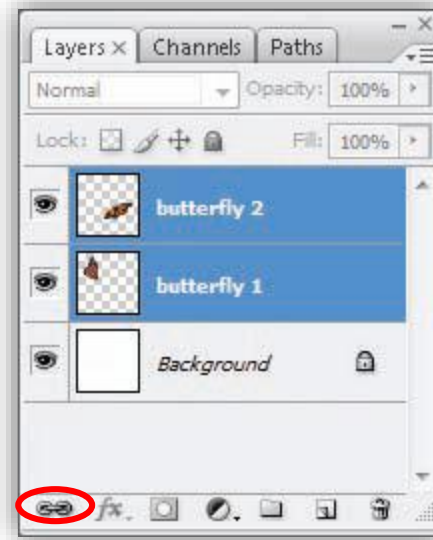
Before Merging



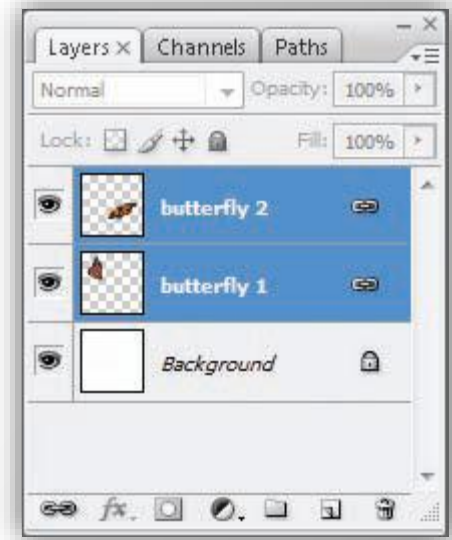
After Merging

Linking Layers

- We link layers to move them all together. To link layers, we select all the layers we want to link by pressing the Shift key while clicking on them. Then we follow the **Layer -> Link Layers** path.
- The better option for linking layers is clicking on the *Link Layers* icon after selecting the layers. To unlink layers, select layers and follow the **Layer -> Unlink Layers** path or just select the layers and click on the *Link Layer* icon again.
- Open the files daisies.psd and butterflies.psd. On the butterflies.psd, link butterfly 1 and the butterfly 2 layers, and move them to the file daisies.psd. As you will see both of the layers will be moved to the daisies.psd file together.



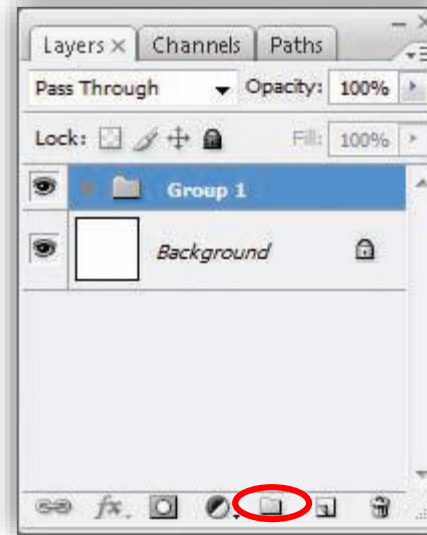
Link Layers Icon



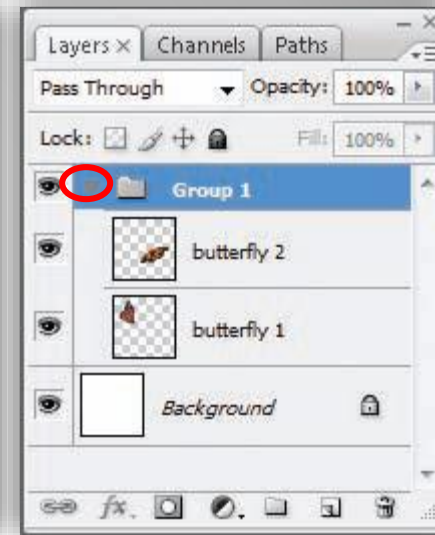
After Linking

Grouping Layers

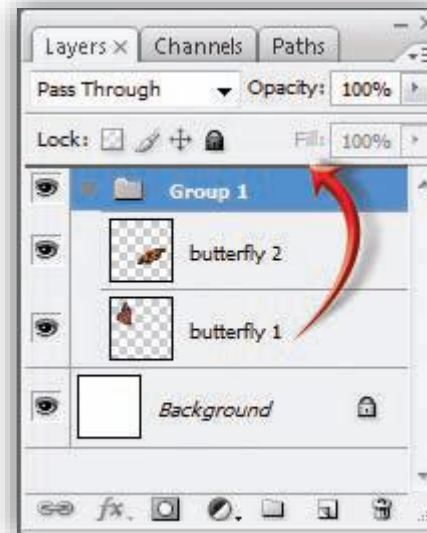
- Grouping layers has two main advantages.
 1. Grouped layers can be edited, modified, moved, given effects together.
 2. Grouping layers helps us to organize the Layers panel when we are working with many layers.
- To group layers, first we select the layers and click **Layer -> Group Layers**. The second way is to drag the selected layers to the *Group Layers* icon below the Layers panel.
- We can hide/show grouped layers by clicking on the arrow given above.
- To move a layer out of a group, drag and drop the layer above the group folder.
- To give a name to a group, same as renaming layers, double click on the group name and type it's new name.



Group Layers Icon



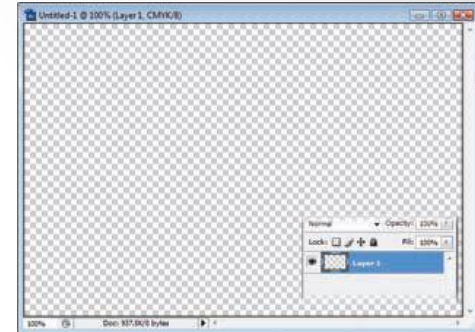
Hide/Show Grouped



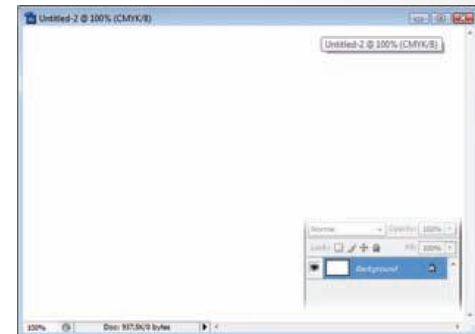
Moving Layers Out of a Group

Background Layers

- There are three kinds of background layers in Photoshop. These are transparent backgrounds, color backgrounds and picture backgrounds.
- When creating a new file, if we define the *Background Content* as transparent, there will be no color on the background. For colored background, before creating a new file we change the background color from toolbox. Then we select background color from the *Background Contents* box while creating a new file. When we open a new picture in Photoshop, by default picture becomes the background layer.
- If we want the background layer to be editable, we need to convert it to a layer. To do this, we need to double click on the Background layer on the *Layers Panel* and give it a name. The converted layer will support transparency.
- Sometimes we might need to convert a layer to a background layer as well. In such cases you need to follow **Layer -> New -> Layer from Background**.



Transparent Background

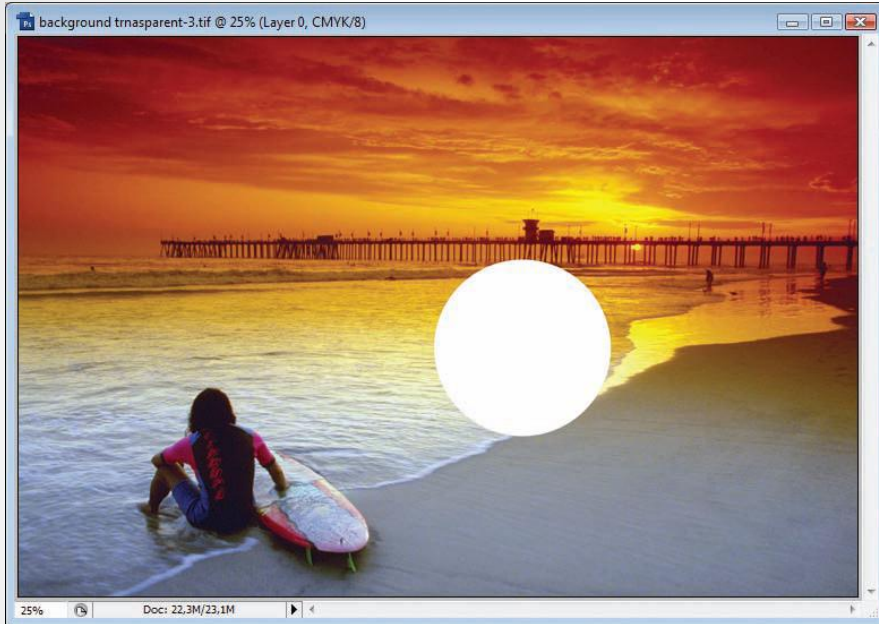


Color Background

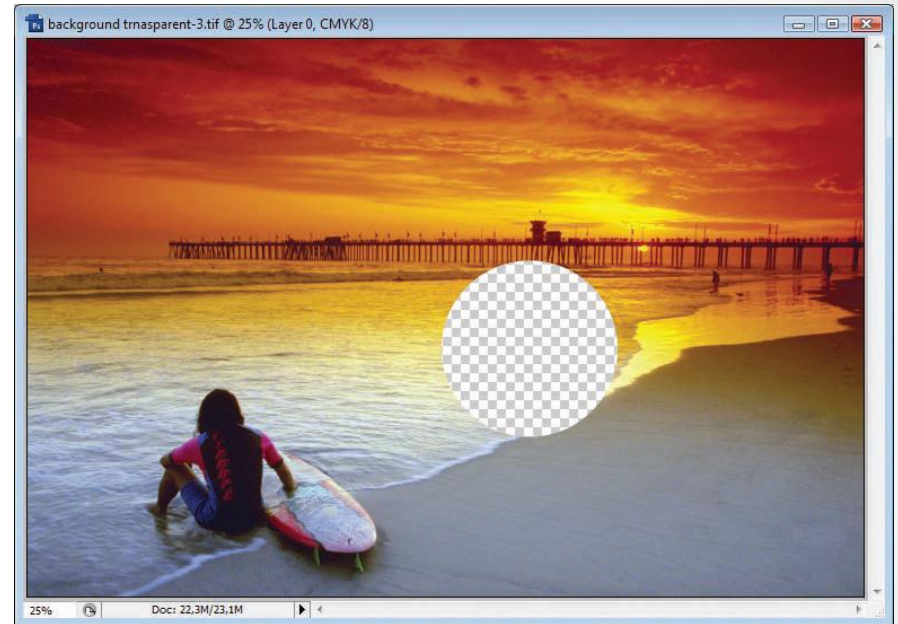


Picture Background

Background Layers



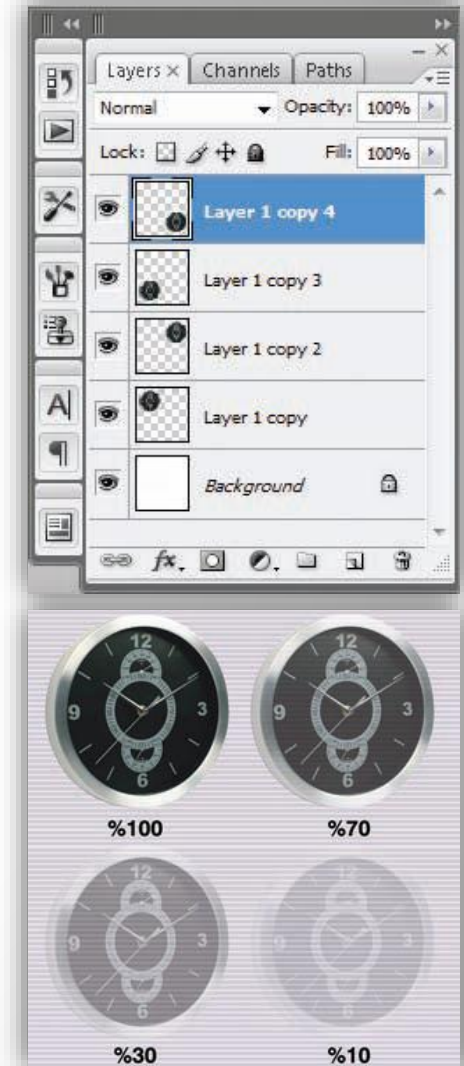
Deleting a Selection on the Background Layer



Deleting a Selection on a Layer Which is
Converted from Background Layer

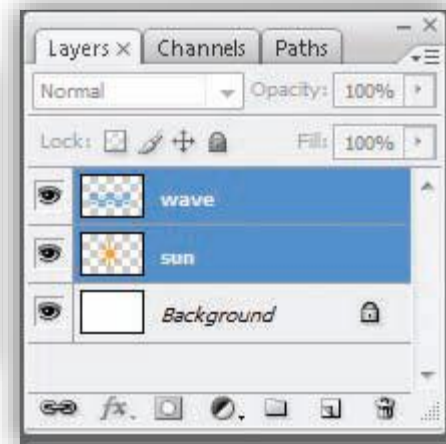
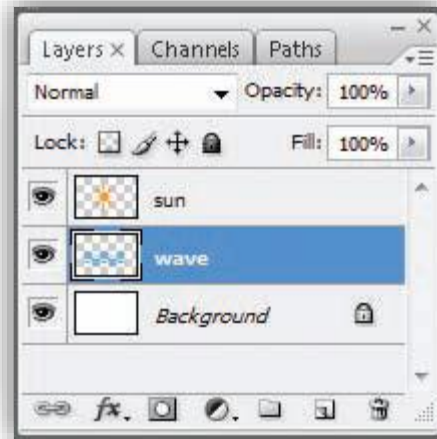
Opacity

- A layer's opacity determines to what degree it obscures or reveals the layer beneath it. A layer with 1% opacity appears nearly transparent, whereas one with 100% opacity appears completely opaque.
- Open the **wall_clock.psd**. As you see on the picture we have four wall clocks which all have an opacity of 100 percent.
- Now select the layers one by one and change their opacity to different values.
- While opacity affects the opaqueness of the whole layer including layer effects, fill only affects the layer content, but not layer effects.



Layer Order

- On layers panel, the layer above is always in front of the other.



Blending Mode

- The blending mode controls how pixels are affected after painting or editing. By changing the blending mode of a layer, we mix the colors of the layer with the layer beneath it. Each mode gives a different result, since ways of mixing is different for each blending mode.
 - Open the images **red_tulips.psd** and **sea.psd**.
 - Drag and drop the Red Tulips onto the sea file by using the Move tool. Place the red tulip so as to cover the whole of canvas.
 - Change the blending mode of the Red Tulips layer to the *Lighten* and the *Vivid Light* modes.



Red_tulips.psd



Sea.psd



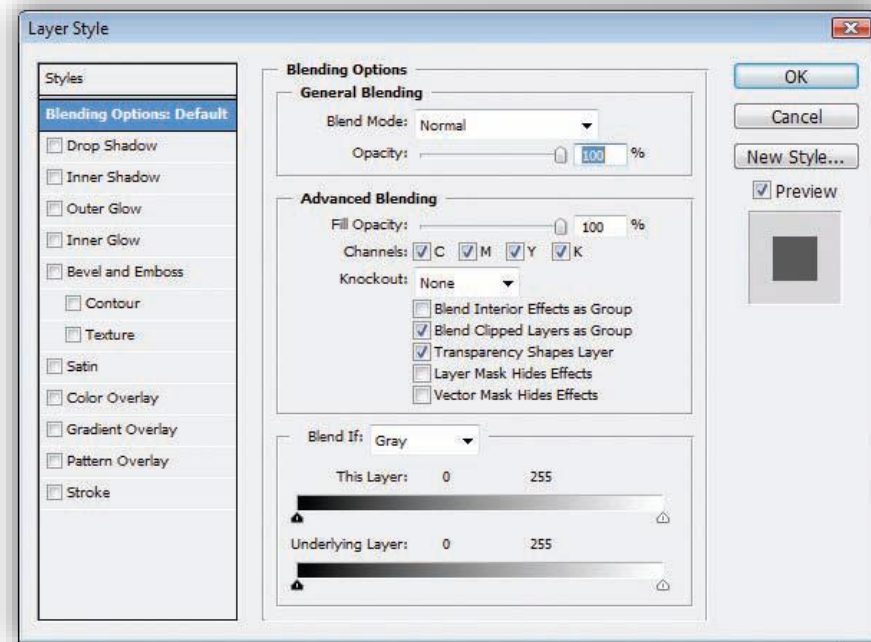
Lighten



Vivid Light

Layer Style

- **Layer Style** menu allows us to customize various layer effects and blend selected contents from multiple layers.
- If we have a look at the *Layer Style* menu, on the left side we see different layer effects. To apply any of those effects, we click on it's name on the left side and change the settings of the effects which will come to the middle of the menu. To apply more than one effect, we tick on the box of each effect we want to add.
- Here are some effects given to the file **clover.psd**.



Practice

- Positioning Layers
 - Open the file badge.psd and make a security officer badge.



The End

...

